

RUBEXTM ALUMINUM

Interchangeable Hub Propellers



RUBEX 3

- * Exclusive squeeze cast process
- * Stronger blades with better performance
- * Outstanding acceleration and top speed



RUBEX 4

- * Exclusive squeeze cast process
- * Stronger blades with better performance
- * Great Acceleration and Midrange performance
- * Great stern lift & handling



RUBEX 3 High Thrust

- * Ideal for heavy applications & pontoon boats.
- * Excellent Forward and Reverse Thrust



RUBEX 3 Plus

- * Exclusive squeeze cast process
- * Stronger blades with better performance
- * Outstanding acceleration and top speed
- * Larger diameter for the Suzuki DF70-140, 15 tooth



iPOP

- * Exclusive squeeze cast process
- * High Performance Double Cupped Blades
- * Improved acceleration and top speed
- * Better holding power and fuel economy

6 ~ 20 Horsepower
(Thru Hub Exhaust)
2-1/2" Gearcase

A

Aluminum 3 blade RUBEX 3 RBX Rubber Hub					
B	D	P	R	PART NO.	
3	9.25	7	R	9111-093-07	
3	9.25	8	R	9111-093-08	
3	9.25	9	R	9111-093-09	
3	9.25	10	R	9111-093-10	
3	9.25	11	R	9111-093-11	
3	9.25	12	R	9111-093-12	

9.9 ~ 35 Horsepower
(Thru Hub Exhaust)
3" Gearcase

B

Aluminum 3 blade RUBEX 3 RBX Rubber Hub B1					
B	D	P	R	PART NO.	
3	11	9	R	9211-110-09	
3	10.8	10	R	9211-108-10	
3	10.5	11	R	9211-105-11	
3	10.3	12	R	9211-103-12	
3	10.1	13	R	9211-101-13	
3	10	14	R	9211-100-14	
3	10	15	R	9211-100-15	

Aluminum 3 blade RUBEX 3 RBX Rubber Hub B2					
B	D	P	R	PART NO.	
3	9.9	9	R	9211-099-09	
3	9.9	10	R	9211-099-10	
3	9.9	11	R	9211-099-11	
3	9.9	12	R	9211-099-12	
3	9.9	13	R	9211-099-13	
3	9.9	14	R	9211-099-14	

Aluminum 3 blade RUBEX 3 RBX Rubber Hub B3					
B	D	P	R	PART NO.	
3	11	9	R	9211-110-09SB	
3	10.8	10	R	9211-108-10SB	
3	10.5	11	R	9211-105-11SB	
3	10.3	12	R	9211-103-12SB	
3	10.1	13	R	9211-101-13SB	
3	10	14	R	9211-100-14SB	
3	10	15	R	9211-100-15SB	

25 ~ 75 Horsepower
(Thru Hub Exhaust)
3-1/4" Gearcase

C

Aluminum 3 blade RUBEX 3 RBX Rubber Hub					
B	D	P	R	PART NO.	
3	12.1	9	R	9311-121-09	
3	12	10	R	9311-120-10	
3	11.6	11	R	9311-116-11	
3	11.4	12	R	9311-114-12	
3	11.1	13	R	9311-111-13	
3	11.1	14	R	9311-111-14	
3	11	15	R	9311-110-15	

40 ~ 140 Horsepower
(Thru Hub Exhaust)
4-1/4" Gearcase

D

Aluminum 3 blade RUBEX 3 RBX Rubber Hub					
B	D	P	R	PART NO.	
3	14	9	R	9411-140-09	
3	14	11	R	9411-140-11	
3	13.75	13	R	9411-138-13	
3	13.5	14	R	9411-135-14	
3	13.5	15	R	9411-135-15	
3	13.5	16	R	9411-135-16	
3	13.25	17	R	9411-133-17	
3	13.25	18	R	9411-133-18	
3	13.2	19	R	9411-132-19	
3	13.2	21	R	9411-132-21	

Aluminum 3 blade RUBEX 3 Plus RBX Rubber Hub					
B	D	P	R	PART NO.	
3	13.875	17	R	9411-139-17	
3	13.875	19	R	9411-139-19	
3	13.875	21	R	9411-139-21	

**Recommended for
Suzuki DF 70~ DF 140
(4 Stroke, 15 Tooth Spline)**

Aluminum 4 blade RUBEX 4 RBX Rubber Hub					
B	D	P	R	PART NO.	
4	13.25	13	R	9413-133-13	
4	13	15	R	9413-130-15	
4	12.75	17	R	9413-128-17	
4	12.5	19	R	9413-125-19	

Aluminum 3 blade High Thrust RUBEX 3 RBX Rubber Hub					
B	D	P	R	PART NO.	
3	14.1	11	R	9411-141-11	

Notice:

1. Engine manufacturer recommends greasing the propeller shaft every 12 months.
2. Make sure all propeller hardware is installed correctly.



Important :
RBX Hub Kits
are required
for installation.

(Hub Kit Not Included)
RBX Patent No : U.S 7,488,225

115 and up Horsepower
(Thru Hub Exhaust)
4-3/4" Gearcase

E

Aluminum 3 blade RUBEX 3 RBX Rubber Hub					
B	D	P	R	PART NO.	
3	15.5	11	R	9511-155-11	
3	15.3	13	R	9511-153-13	
3	15	15	R	9511-150-15	
3	15	15	L	9512-150-15	
3	14.8	17	R	9511-148-17	
3	14.8	17	L	9512-148-17	
3	14.5	19	R	9511-145-19	
3	14.5	19	L	9512-145-19	
3	14.3	21	R	9511-143-21	
3	14.3	21	L	9512-143-21	
3	14.2	23	R	9511-142-23	
3	14.2	23	L	9512-142-23	

Aluminum 3 blade RUBEX 3 Plus RBX Rubber Hub					
B	D	P	R	PART NO.	
3	16	13	R	9511-160-13	
3	15.8	15	R	9511-158-15	
3	15.8	15	L	9512-158-15	
3	15.5	17	R	9511-155-17	
3	15.5	17	L	9512-155-17	
3	15.3	19	R	9511-153-19	
3	15.3	19	L	9512-153-19	
3	15.3	21	R	9511-153-21	
3	15.3	21	L	9512-153-21	
3	15.3	23	R	9511-153-23	

Aluminum 3 blade (DOUBLE CUP) RUBEX 3 Plus RBX Rubber Hub					
B	D	P	R	PART NO.	
3	15.5	11	R	9501-155-11DC	
3	15.5	13	R	9501-155-13DC	
3	15	15	R	9501-150-15DC	
3	14.8	17	R	9501-148-17DC	

Aluminum 3 blade iPOP RBX Rubber Hub					
B	D	P	R	PART NO.	
3	14.8	18	R	9501-148-18	
3	14.5	20	R	9501-145-20	
3	14.3	22	R	9501-143-22	

Aluminum 4 blade RUBEX 4 RBX Rubber Hub					
B	D	P	R	PART NO.	
4	14.75	15	R	9513-148-15	
4	14.75	15	L	9514-148-15	
4	14.5	17	R	9513-145-17	
4	14.5	17	L	9514-145-17	
4	14.25	19	R	9513-143-19	
4	14.25	19	L	9514-143-19	
4	14	21	R	9513-140-21	
4	14	21	L	9514-140-21	

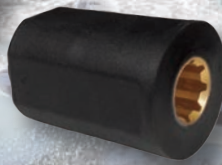
INTERCHANGEABLE HUB

A Series 6-20 Horsepower / 7-12 Pitches / 2-1/2" Gearcase

B Series 9.9-35 Horsepower / 9-15 Pitches / 3" Gearcase

FOR _____

MERCURY / BRP / EVINRUDE / JOHNSON / YAMAHA
SUZUKI / TOHATSU / HONDA



RUBEX™

**DOUBLE CUP
PONTOON PROPELLER**

- **Additional cupping to grip the water**
- **Prevents cavitation**
- **Prevents blowouts**
- **Reduces slip**



RUBEX 3 Plus (DOUBLE CUP)

B	D	P	R	PART NO.
3	15.5	11	R	9501-155-11DC
3	15.5	13	R	9501-155-13DC
3	15	15	R	9501-150-15DC
3	14.8	17	R	9501-148-17DC

PR SERIES

High Precision Blade for High Performance

- Lab Finished Pro series with precise pitch and cup control for single and multi-engine applications.
- Patented SOLAS Adjustable Vents(SAV) fine tune the amount of venting to decrease planning time.
- Longer barrel to maximize acceleration.
- Much more aggressive camber and cupping for top performance and speed.



PRO L3



PRO L4

HOW TO CHOOSE A RUBEX™ HUB

BRONZE

OR

ALUMINUM



Suggested for :

- > High Horsepower (115 & Up)
- > Extreme Use
- > Saltwater / Freshwater Use
- > Stainless Steel Propellers

Suggested for :

- > Low to High Horsepower
- > Regular Use
- > Freshwater & Occasional Saltwater Use
- > Aluminum & Stainless Steel Propellers

THE "B" found at the end of the RUBEX hub kit number denotes that the hub has a bronze core. RUBEX hub kits with a "B" will fit the same applications as its none "B" counterpart.

PRO SERIES

SAV Solas Adjust Vent



High Precision Blade
for
High Performance



PRO L3

1. More aggressive camber design & cupping
2. Longer barrel

PRO L4

3. Equipped with SAV (Solas Adjustable Vent)
4. Mainly for bigger horsepower 200hp and up



RUBEX S3

- * High performance for bass & bay boats
- * Equipped with SAV (Solas Adjustable Vent)
- * High rake design for increased bow lift
- * Extra cupping suitable for high engine mounting
- * Cut down blade reduces drag



HYDRQ

- * Smaller blade area to increase rpms & speed
- * Great Top Speed



RUBEX C4

- * All-around performance
- * Great Acceleration and Midrange performance
- * Great stern lift & acceleration



RUBEX HR3

- * Performance prop for high speed planing hulls
- * High rake blade design provides excellent bow lift
- * Excellent acceleration and top speed
- * Cupped blade design increases bite & reduces slip



RUBEX HR4

- * Great stern lift & acceleration
- * High rake and cupped blade design
- * Powerful thrust & very smooth performance
- * Increased speed & economy in the mid-range



RUBEX L3

- * Large diameter & blade area for big boats
- * Great high speed and midrange performance
- * Excellent fuel economy for offshore boats



RUBEX NS3

- * All-around performance
- * Good acceleration
- * Large ear blade design



RUBEX L4

- * Bravo I propeller replacement
- * High rake and cupped blade design
- * Great stern lift & acceleration
- * Excellent top speed & very smooth performance



RUBEX L3 Plus

- * Large diameter & blade area for big boats
- * Larger Diameter than L3
- * Great high speed and mid range performance
- * Excellent fuel economy for offshore boats

C 25~ 75 Horsepower (Thru Hub Exhaust) 3-1/4" Gearcase

Stainless steel 3 blade
RUBEX NS3 RBX Rubber Hub

B	D	P	R	PART NO.
3	11 5/8	11	R	9331-116-11
3	11 3/8	12	R	9331-114-12
3	11 1/8	13	R	9331-111-13
3	11 1/8	14	R	9331-111-14
3	11	15	R	9331-110-15

Stainless steel 4 blade
RUBEX C4 RBX Rubber Hub

B	D	P	R	PART NO.
4	11 1/2	12	R	9333-115-12
4	11 1/2	13	R	9333-115-13
4	11 1/2	14	R	9333-115-14

D 40~ 140 Horsepower (Thru Hub Exhaust) 4-1/4" Gearcase

Stainless steel 3 blade
HYDRG RBX Rubber Hub

B	D	P	R	PART NO.
3	13 1/8	14	R	9481-131-14
3	13 1/8	16	R	9481-131-16
3	13 1/8	18	R	9481-131-18
3	13 1/8	20	R	9481-131-20
3	13 1/8	22	R	9481-131-22

Stainless steel 3 blade
RUBEX NS3 RBX Rubber Hub

B	D	P	R	PART NO.
3	13 3/4	13	R	9431-138-13
3	13 3/4	13	L	9432-138-13
3	13 1/2	15	R	9431-135-15
3	13 1/2	15	L	9432-135-15
3	13 1/4	17	R	9431-133-17
3	13 1/4	17	L	9432-133-17
3	13	19	R	9431-130-19
3	13	19	L	9432-130-19
3	13	21	R	9431-130-21

Stainless steel 4 blade
RUBEX HR4 RBX Rubber Hub

B	D	P	R	PART NO.
4	13 1/2	13	R	9453-135-13
4	13 1/2	13	L	9454-135-13
4	13 1/4	15	R	9453-133-15
4	13 1/4	15	L	9454-133-15
4	13 1/4	16	R	9453-133-16
4	13	17	R	9453-130-17
4	13	17	L	9454-130-17
4	13	19	R	9453-130-19
4	13	19	L	9454-130-19
4	13	21	R	9453-130-21
4	13	21	L	9454-130-21

D+ (Thru Hub Exhaust) 4-1/4" Gearcase

Stainless steel 3 blade
RUBEX HR3 RBX Rubber Hub

B	D	P	R	PART NO.
3	13.9	15	R	9451-139-15
3	13.9	15	L	9452-139-15
3	13.9	17	R	9451-139-17
3	13.9	17	L	9452-139-17
3	13.9	19	R	9451-139-19
3	13.9	19	L	9452-139-19
3	13.9	21	R	9451-139-21
3	13.9	21	L	9452-139-21
3	13.9	23	R	9451-139-23
3	13.9	23	L	9452-139-23
3	13.9	25	R	9451-139-25



Important :
RBX Hub Kits are required for installation.

(Hub Kit Not Included)
RBX Patent No : U.S 7,488,225

⊖ **Notice:**

1. Engine manufacturer recommends greasing the propeller shaft every 12 months.
2. Make sure all propeller hardware is installed correctly.



E 115 and up Horsepower (Thru Hub Exhaust) 4-3/4" Gearcase

Stainless steel 3 blade
RUBEX L3 RBX Rubber Hub

B	D	P	R	PART NO.
3	15 3/4	15	R	9571-158-15
3	15 3/4	15	L	9572-158-15
3	15 5/8	16	R	9571-156-16
3	15 5/8	16	L	9572-156-16
3	15 1/2	17	R	9571-155-17
3	15 1/2	17	L	9572-155-17
3	15 3/8	18	R	9571-154-18
3	15 3/8	18	L	9572-154-18
3	15 1/4	19	R	9571-153-19
3	15 1/4	19	L	9572-153-19
3	15 1/8	20	R	9571-151-20
3	15 1/8	20	L	9572-151-20
3	15	21	R	9571-150-21
3	15	21	L	9572-150-21
3	14 7/8	22	R	9571-149-22
3	14 7/8	22	L	9572-149-22
3	14 3/4	23	R	9571-148-23
3	14 3/4	23	L	9572-148-23
3	14 1/2	25	R	9571-145-25
3	14 1/2	25	L	9572-145-25
3	14 1/2	27	R	9571-145-27
3	14 1/2	27	L	9572-145-27

Stainless steel 3 blade
RUBEX L3 Plus RBX Rubber Hub

B	D	P	R	PART NO.
3	16	13	R	* 9571-160-13
3	16	13	L	* 9572-160-13
3	16	15	R	9571-160-15
3	16	15	L	9572-160-15
3	16	17	R	9571-160-17
3	16	17	L	9572-160-17
3	16	19	R	9571-160-19
3	16	19	L	9572-160-19
3	15 3/4	21	R	9571-158-21
3	15 3/4	21	L	9572-158-21
3	15 5/8	23	R	9571-156-23
3	15 5/8	23	L	9572-156-23

* Lab finished version

Stainless steel 3 blade
RUBEX NS3 RBX Rubber Hub

B	D	P	R	PART NO.
3	14 1/2	15	R	9531-145-15
3	14 1/2	15	L	9532-145-15
3	14 1/4	17	R	9531-143-17
3	14 1/4	17	L	9532-143-17
3	14	19	R	9531-140-19
3	14	19	L	9532-140-19
3	14	21	R	9531-140-21
3	14	21	L	9532-140-21
3	14	23	R	9531-140-23
3	14	23	L	9532-140-23

Stainless steel 3 blade
RUBEX HR3 RBX Rubber Hub

B	D	P	R	PART NO.
3	15	14	R	9551-150-14
3	15	14	L	9552-150-14
3	14 3/4	16	R	9551-148-16
3	14 3/4	16	L	9552-148-16
3	14 3/4	17	R	9551-148-17
3	14 3/4	17	L	9552-148-17
3	14 3/4	18	R	9551-148-18
3	14 3/4	18	L	9552-148-18
3	14 3/4	19	R	9551-148-19
3	14 3/4	19	L	9552-148-19
3	14 3/4	20	R	9551-148-20
3	14 3/4	20	L	9552-148-20
3	14 1/2	21	R	9551-145-21
3	14 1/2	21	L	9552-145-21
3	14 1/4	22	R	9551-143-22
3	14 1/4	22	L	9552-143-22
3	14	24	R	9551-140-24
3	14	24	L	9552-140-24

Stainless steel 3 blade SAV System
RUBEX S3 RBX Rubber Hub

B	D	P	R	PART NO.
3	15 1/8	21	R	9561-151-21
3	15 1/8	22	R	9561-151-22
3	15 1/8	23	R	9561-151-23
3	15 1/8	24	R	9561-151-24
3	15 1/8	25	R	9561-151-25
3	15 1/8	26	R	9561-151-26
3	15 1/8	27	R	9561-151-27
3	15 1/8	28	R	9561-151-28

Stainless steel 4 blade
RUBEX HR4 RBX Rubber Hub

B	D	P	R	PART NO.
4	14 1/2	14	R	9553-145-14
4	14 1/2	15	R	9553-145-15
4	14 1/2	15	L	9554-145-15
4	14 1/2	16	R	9553-145-16
4	14 1/4	17	R	9553-143-17
4	14 1/4	17	L	9554-143-17
4	14 1/8	18	R	9553-141-18
4	14 1/8	18	L	9554-141-18
4	14 1/8	19	R	9553-141-19
4	14 1/8	19	L	9554-141-19
4	14	20	R	9553-140-20
4	14	20	L	9554-140-20
4	14	21	R	9553-140-21
4	14	21	L	9554-140-21
4	14	23	R	9553-140-23
4	14	23	L	9554-140-23
4	14	25	R	9553-140-25
4	14	25	L	9554-140-25

Stainless steel 3 blade
RUBEX NS3 Plus RBX Rubber Hub

B	D	P	R	PART NO.
3	15 5/8	11	R	9531-156-11
3	15 5/8	13	R	9531-156-13
3	15 5/8	13	L	9532-156-13

Stainless steel 3 blade
HYDRQ RBX Rubber Hub

B	D	P	R	PART NO.
3	14 1/2	15	R	9581-145-15
3	14 1/2	15	L	9582-145-15
3	14 1/4	17	R	9581-143-17
3	14 1/4	17	L	9582-143-17
3	13 7/8	19	R	9581-139-19
3	13 7/8	19	L	9582-139-19
3	13 3/4	21	R	9581-138-21
3	13 3/4	21	L	9582-138-21

Stainless steel 3 blade SAV System
PRO L3 Lab finished RBX Rubber Hub

B	D	P	R	PART NO.
3	15 1/4	19	R	9575-153-19
3	15 1/4	19	L	9576-153-19
3	15	21	R	9575-150-21
3	15	21	L	9576-150-21
3	14 3/4	23	R	9575-148-23
3	14 3/4	23	L	9576-148-23
3	14 1/2	25	R	9575-145-25
3	14 1/2	25	L	9576-145-25

Stainless steel 4 blade SAV System
PRO L4 Lab finished RBX Rubber Hub

B	D	P	R	PART NO.
4	15	18	R	9577-150-18
4	15	18	L	9578-150-18
4	15	20	R	9577-150-20
4	15	20	L	9578-150-20
4	15	22	R	9577-150-22
4	15	22	L	9578-150-22
4	15	24	R	9577-150-24
4	15	24	L	9578-150-24
4	15	26	R	9577-150-26
4	15	26	L	9578-150-26
4	15	28	R	9577-150-28
4	15	28	L	9578-150-28

Stainless steel 4 blade
RUBEX L4 RBX Rubber Hub

B	D	P	R	PART NO.
4	15 1/4	18	R	9573-153-18
4	15 1/4	18	L	9574-153-18
4	15 1/4	20	R	9573-153-20
4	15 1/4	20	L	9574-153-20
4	15 1/4	22	R	9573-153-22
4	15 1/4	22	L	9574-153-22
4	15 1/4	24	R	9573-153-24
4	15 1/4	24	L	9574-153-24
4	15 1/4	26	R	9573-153-26
4	15 1/4	26	L	9574-153-26
4	15 1/4	28	R	9573-153-28



RBX Patent No : U.S 7,488,225

Hub Kits for RUBEX

• RUBEX HUB KIT APPLICATION CHART •

RUBEX HUB KIT APPLICATION CHART		ALUMINUM HUB		BRONZE HUB		
Mercury / Mariner / Mercruiser		Hub Kit #	Hub #	Hub Kit #	Hub #	Prop Category
6,8,9.9 HP (2-Stroke) 86 & Newer, 10 HP 95 & Newer, 15 HP (2 & 4-Stroke) 89-06, 8, 9.9 HP (4-Stroke Not Big Foot) 02-04, 10, 15 HP (Sea Pro/Marathon) 95-01, (FORCE) 9.9 & 15 HP 96-98; 2-1/2" Gearcase (8 Tooth Spline)		N/A	N/A	RBX-A10	N/A	A
9.9 HP Bigfoot 4 Stroke 2005 & Newer, 15, 20 HP 4 Stroke 2007 & Newer, Japan Origin (Tohatsu) 2-1/2" Gearcase (14 Tooth Spline)		N/A	N/A	RBX-A50	N/A	A
9.9 & 15 HP (4-Stroke Big Foot/Sail) 99-2005, 18 HP (Mercury) 80-85, 20 HP (2-Stroke Mercury) 86-02, 20 HP (Mariner 2-stroke) 85 & Newer, 25 HP (Mariner 2-Stroke) 85 & Newer, 25 HP (2-Stroke Mercury) 80-05, 25 HP (Sea Pro/Marathon) All Years, (FORCE) 25 HP 3Cyl 95-98; (10 Tooth Spline) 3" Gearcase		N/A	N/A	RBX-B10	N/A	B1
25 HP 80-84, 28 HP 76-79, 30 HP 79-90; (10 Tooth Spline) (Japan Origin Yamaha) 3" Gearcase		N/A	N/A	RBX-B30	N/A	B2
25 HP 4-Stroke (Not Bigfoot) 06 & Newer, 30 HP 4-Stroke (Not Bigfoot) 06 & Newer; (Japan Origin Tohatsu) (10 Tooth Spline) 3" Gearcase		N/A	N/A	RBX-B50	N/A	B2
25 HP Bigfoot 1999-05, 30 HP Bigfoot 2010 and Newer, 30HP (2 & 4-Stroke) 1994-05, 30 HP (Sea Pro/Marathon) 1994 & Newer, 35 HP 1984-89, 402 & 500 Models 1974-84, 40 - 50 HP (2 & 4-Stroke, Not Bigfoot) 1997 & Newer, 45 HP 1986-1989, 48 HP (Mariner) All Years, 55 HP (Sea Pro/Marathon) 1995 & Newer, 60 HP (Mariner) 1976, 60 HP (2 & 4-Stroke, Not Bigfoot or Sea Pro/Marathon) 1978 & Newer, 65 HP (Includes Model 650) 1972-1976, 70 HP (Includes Model 700) thru 1983, 80 HP (Mariner) 1977; 13 Tooth spline 3-1/4" Gearcase		RBX-114	17013300	N/A	N/A	C
40-60 HP Bigfoot, 40-140 HP (except 135 HP) V4 Gearcase 1978 & Newer; 15 tooth spline 4-1/4" Gearcase		RBX-102	17015300	RBX-102B	17015304	D
90HP, 115HP (Command Thrust) 2014 & Newer, 135 HP 1987 & Newer, 150-300 HP 1978 & Newer; 15 tooth spline 4-3/4" Gearcase		RBX-102	17015300	RBX-102B	17015304	E
Mercruiser Alpha One & Bravo One (less than 400HP); 15 tooth spline		RBX-102	17015300	RBX-102B	17015304	E
Models with 1 1/4" propshaft; 19 tooth spline (Rubber & SS Hub)		RBX-123	17016300	N/A	N/A	E+
225 EFI (4-Stroke) manufactured by Yamaha ; 15 tooth spline 4-3/4" Gearcase		RBX-124	17015300	RBX-124B	17015304	E

Nissan / Tohatsu		Hub Kit #	Hub #	Hub Kit #	Hub #	Prop Category
9.9 HP (2-Stroke) 1984 & Newer, 15 HP (2-Stroke) 1985 & Newer, 18 HP (2-Stroke) 1985 & Newer, 20 HP (4-Stroke) 2007 & Newer, 9.9 HP (4-Stroke) 00-03, 15 HP (4-Stroke) 2000 & Newer, 18 HP (4-Stroke) 01-08, 12 HP 85-88, MFS 9.9, 15, 18, 20 (4-Stroke); MSFMFS 9.9, 15, 18, 20; 2-1/2" Gearcase (14 Tooth Spline)		N/A	N/A	RBX-A50	N/A	A
MFS 25, 30 (4-Stroke), NSF 25, 30 (4-Stroke), 25 HP 86-01, 25 HP (4-Stroke) 02 & Newer, 30 HP 85-01, 30 HP (4-Stroke) 02 & Newer, 30HP TLDI 2016 & Newer; (10 Tooth Spline) 3" Gearcase		N/A	N/A	RBX-B50	N/A	B2
35 HP (35B only) Thru 1984, 40 HP 1984 & Newer, 50 HP (All except 50C) 1992 & Newer; 13 tooth spline 3-1/4" Gearcase		RBX-116	17013300	N/A	N/A	C
50 HP (50C only) 1987-91, 55 HP 1981-88, 60A 1986-99, 70A & 70B 1981-95; 13 tooth spline 3-1/4" Gearcase		RBX-112	17013300	N/A	N/A	C
60-140 HP (except 60A, 70A, & 70B) 1987 & Newer; MFS75A-115A 2020 & Newer; 15 tooth spline 4-1/4" Gearcase		RBX-109	17015300	RBX-109B	17015304	D
BFT 115-250 HP 2014 & Newer; 15 tooth spline 4-3/4" Gearcase		RBX-107	17015300	RBX-107B	17015304	E



RBX Box



RUBEX HUB KIT APPLICATION CHART	ALUMINUM HUB		BRONZE HUB		Prop Category
	Hub Kit #	Hub #	Hub Kit #	Hub #	
Evinrude / Johnson / BRP					
8 HP (4-Stroke) 1996-2005; 9.9, 15 HP (2-Stroke) 1974-2005; 9.9, 15 HP (4-Stroke) 1995-2001, 12HP 2012 & Newer; 2-1/2" Gearcase (13 Tooth Spline)	N/A	N/A	RBX-A20	N/A	A
9.9 - 15 HP (4-Stroke) Johnson 02-07 JAPAN ORIGIN SUZUKI 2-1/2" Gearcase (10 Tooth Spline)	N/A	N/A	RBX-A40	N/A	A
15 HP E-TEC H.O. 2011 & Newer, 20 HP 2 Cyl 84-97, 25 HP (Commercial) 93-05, 25 HP 2 & 3 Cyl 84 & Newer, 25 HP E-TEC 2009 & Newer, 30 HP 2 Cyl 84 & Newer, 30 HP E-TEC 2009 & Newer, 35 HP 2 Cyl 79-83, 35 HP 3 Cyl 97-01; (14 Tooth Spline) 3" Gearcase	N/A	N/A	RBX-B20	N/A	B1
Johnson 25-30 HP (4-Stroke) 04-07; JAPAN ORIGIN SUZUKI (10 Tooth Spline) 3" Gearcase	N/A	N/A	RBX-B40	N/A	B3
40 & 50 HP (4-Stroke) 1999-05; 13 tooth spline 3-1/4" Gearcase	RBX-115	17013300	N/A	N/A	C
40-75 HP (Small Gearcase) 1975-2005; 13 tooth spline 3-3/8" Gearcase	RBX-111	17023300	N/A	N/A	C
40-75 HP (Large Gearcase) 1968 & Newer, 85-140 HP 1969 & Newer; 13 tooth spline 4-1/4" Gearcase	RBX-106	17024300	RBX-106B	17024301	D
60 & 70 HP (4-Stroke) 1998 & Newer; 13 tooth spline 4-1/4" Gearcase	RBX-110	17024300	RBX-110B	17024301	D
90 & 115 HP (4-Stroke) 2002-07; 15 tooth spline 4-1/4" Gearcase	RBX-125	17015300	RBX-125B	17015304	D
140 HP (4-Stroke) 2002-07; 15 tooth spline 4-1/4" Gearcase	RBX-126	17015300	RBX-126B	17015304	D
90-300 HP 1991 & Newer; 15 tooth spline 4-3/4" Gearcase	RBX-100	17025300	RBX-100B	17025302	E
90-300 HP 1976-90; 15 tooth spline 4-3/4" Gearcase	RBX-101	17025300	RBX-101B	17025302	E
200 & 225 HP (4-Stroke) 2004-2005; 15 tooth spline 4-3/4" Gearcase	RBX-104	17015300	RBX-104B	17015304	E
150-300 HP G2 Engine 2014 & Newer; 15 tooth spline 4-3/4" Gearcase	RBX-151	17025301	RBX-151B	17025303	E

Honda	Hub Kit #	Hub #	Hub Kit #	Hub #	Prop Category
BF 8 HP 00 & Newer, BF 15 HP 91 & Newer, BF 9.9 HP 88 & Newer, BF 20 HP 03 & Newer; 2-1/2" Gearcase (8 Tooth Spline)	N/A	N/A	RBX-A30	N/A	A
BF 25 HP 94 & Newer, BF 30 HP 95 & Newer; (10 Tooth Spline) 3" Gearcase	N/A	N/A	RBX-B50	N/A	B2
BF 35 & BF 45 1991-94, BF 40, 50, & 50A 1995 & Newer, BF 60 2010 & Newer; 13 Tooth Spline 3-1/4" Gearcase	RBX-113	17013300	N/A	N/A	C
BFP 60 2010 & Newer, BF 75 & BF 90 1999 & Newer, BF80 & BF100 2013 & Newer. BF 115 1998-10, BF 130 1998-04; 15 Tooth Spline 4-1/4" Gearcase	RBX-107	17015300	RBX-107B	17015304	D
BF 75-90 1995-98; 15 tooth spline 4-1/4" Gearcase	RBX-102	17015300	RBX-102B	17015304	D
BF 115D 2011 & Newer, BF 135-250 2002 & Newer; 15 Tooth Spline 4-3/4" Gearcase	RBX-107	17015300	RBX-107B	17015304	E

Force	Hub Kit #	Hub #	Hub Kit #	Hub #	Prop Category
40 & 50 HP 1995-98, 70 HP 1991-95, 75 HP 1996-98; 13 tooth spline 3-1/4" Gearcase	RBX-114	17013300	N/A	N/A	C
75-150 HP (Thru Hub Exhaust) 1995-99, 85-150 HP (Dual Exhaust) 1988-94; 15 Tooth Spline 4-3/4" Gearcase	RBX-102	17015300	RBX-102B	17015304	D



RUBEX HUB KIT APPLICATION CHART	ALUMINUM HUB		BRONZE HUB		Prop Category
	Hub Kit #	Hub #	Hub Kit #	Hub #	
Yamaha					
T8, T9.9 All, F9.9 (4-Stroke) 00-07, F15 (4 Stroke) 98 & Newer, F20(4-Stroke) 07-17, 9.9 HP (2-Stroke) 84-09, 15 HP (2-Stroke) 84-09, F15 C 07 & Newer, 2-1/2" Gearcase (8 Tooth Spline)	N/A	N/A	RBX-A30	N/A	A
20 HP 96-97, F20 (4 Stroke) 18 & Newer , F25 (4 Stroke) 98-06; 10 & Newer, 25 HP 80 & Newer, 30 HP 1979-2002 (10 Tooth Spline) 3" Gearcase	N/A	N/A	RBX-B30	N/A	B2
T25 HP 2010 - 2018, F30 (4-Stroke) 2001-05, F40 (4-Stroke) 1999 & Newer, F50 (4-Stroke) 1995 & Newer, F60 (4-Stroke) 1999 & Newer, 40 HP & 50 HP (not T50) 1984 & Newer, 48 HP 1995-00, 55 HP 1976-95, 60 HP 1976-91 (not T60); 13 tooth spline 3-1/2" Gearcase	RBX-117	17013300	N/A	N/A	C
T50 1996 & Newer, T60 2003 & Newer, 60 HP (not F60) 1992-05, 70-100 HP (not F75B, F90B & F100B) 1984 & Newer; 15 tooth spline 4-1/4" Gearcase	RBX-208	17015302	RBX-208B	17015301	D
80-140 HP 1977-83; 15 tooth spline 4-1/4" Gearcase	RBX-102	17015300	RBX-102B	17015304	D
F75B & F90B & F100B / 115 HP & 130 HP 1984 & Newer, F115 (4-Stroke) 2000 & Newer; 15 tooth spline 4-1/4" Gearcase	RBX-203	17015302	RBX-203B	17015301	D
150-175 HP 1978-83; 15 tooth spline 4-3/4"Gearcase	RBX-102	17015300	RBX-102B	17015304	E
150-225 HP 1984 & Newer, 15 tooth spline	RBX-203	17015302	RBX-203B	17015301	E
250 HP 1984 & Newer, 15 tooth spline; 300 HP (4 Stroke V6 Engine) 2004-2007 & 2010 & Newer; Sterndrives 1989-1993, 15 tooth spline	N/A	N/A	RBX-203B	17015301	E
200 – 250 HP VMAX SHO V6	N/A	N/A	RBX-203X	17015301	E
300 HP (4-stroke V8 Engine), 350 HP (4-stroke V8 Engine); 17 tooth spline 5-1/4" Gearcase (Rubber & Bronze Hub)	N/A	N/A	RBX-127	17039300	E+

You need a Hub Kit and a Prop for complete installation :

1. Locate Horsepower/Model and Year.
2. Read across to reference RUBEX™ Hub Kit/Propeller series.
3. Select propeller diameter & pitch from corresponding propeller series.

OMC, Cobra, King Cobra, Cobra SX, Evinrude/Johnson/BRP are registered trademarks of the Bombardier Recreational Products Inc. . Mercury, Mariner, Mercruiser, Typhoon, Quicksilver & Force are registered trademarks of the Brunswick Corporation. Volvo is a registered trademark of Volvo Penta Marine Products L.P. Suzuki is a registered trademark of the Suzuki Motor Corp. Yamaha is a registered trademark of the Yamaha Corp. Honda is a registered trademark of the Honda Motor Co.,Ltd. Tohatsu is a registered trademark of the Tohatsu Corp. Nissan is a registered trademark of the Nissan Jidosha Motor Corp.



RBX Box



RUBEX HUB KIT APPLICATION CHART	ALUMINUM HUB		BRONZE HUB		Prop Category
	Hub Kit #	Hub #	Hub Kit #	Hub #	
OMC / Cobra Sterndrives					
Model 400 Cobra 1978-91; 13 tooth spline 4-1/4" Gearcase	RBX-106	17024300	RBX-106B	17024301	D
Model 800/Cobra/King Cobra 1978-90; 15 tooth spline 4-3/4" Gearcase	RBX-101	17025300	RBX-101B	17025302	E
Model 800/Cobra/King Cobra 1991-94; 15 tooth spline 4-3/4" Gearcase	RBX-100	17025300	RBX-100B	17025302	E
Cobra SX 1994 & Newer; 19 tooth spline 4-3/4" Gearcase	RBX-105	17075300	RBX-105B	17075301	E

Volvo	Hub Kit #	Hub #	Hub Kit #	Hub #	Prop Category
SX Sterndrives 1994 & Newer; 19 tooth spline 4-3/4" Gearcase	RBX-105	17075300	RBX-105B	17075301	E

Suzuki	Hub Kit #	Hub #	Hub Kit #	Hub #	Prop Category
DF 8A (4-Stroke) 2011 & Newer, DF 9.9A/DF9.9B (4-Stroke) 2010 & Newer, DF 15 (4-Stroke) 96-2012, DT 9.9 83-87, DT 15 83-88, 9.9C and 9.9CN not applicable, DF 9.9 (4 Stroke) 96 & Newer, DT 15C 89-97, DF15A; DF20A 2013 & Newer 2-1/2" Gearcase (10 Tooth Spline)	N/A	N/A	RBX-A40	N/A	A
DT 20 83-88, DF 25A 2014 & Newer, DT 25 & 25C 83-00, DF 25 (Includes V-Twin) 2000 & Newer, DF 25R 2010 & Newer, DT 30 & 30C 83-97, DF 30 00-07, DF 30A 2014 & Newer; (10 Tooth Spline) 3" Gearcase	N/A	N/A	RBX-B40	N/A	B3
DT 35C 1987-89, DT 40 1983-98, DF 40 & DF 50 (4-Stroke) 1999-10, DF 40A & DF 50A (4-Stroke) 2011 & Newer, DT 50 & 50M 1983-84, DT 55 1985-97, DT 60 1983-84, DF 60A (4-Stroke) 2010 & Newer, DT 65 1985-97; 13 tooth spline 3-1/4" Gearcase	RBX-115	17013300	N/A	N/A	C
DF 60 (4-Stroke) 1998-09, DF 70 (4-Stroke) 1998-08, DT 75-140 HP 1979-01; 13 tooth spline 4-1/4" Gearcase	RBX-110	17024300	RBX-110B	17024301	D
DF 70A & DF 80A & DF 90A (4-Stroke) 2009 & Newer; 15 tooth spline 4-1/4" Gearcase	RBX-150	17015300	RBX-150B	17015304	D
DF 90 2001-08, DF 100 2009 & Newer, DF 115 2001-12, (All 4-Stroke); 15 tooth spline 4-1/4" Gearcase	RBX-125	17015300	RBX-125B	17015304	D
DF 115A & 140A 2013 & Newer, DF 140 2002-12, (All 4-Stroke); 15 tooth spline 4-1/4" Gearcase	RBX-126	17015300	RBX-126B	17015304	D
DT 150-225 HP (2-Stroke) 1986 & Newer , DF 150-300 HP (4-Stroke); 15 tooth spline 4-3/4" Gearcase	RBX-104	17015300	RBX-104B	17015304	E

OXE Diesel	Hub Kit #	Hub #	Hub Kit #	Hub #	Prop Category
125 HP, 150 HP, 175 HP, 200 HP; 15 tooth spline	RBX-102	17015300	RBX-102B	17015304	E
300 HP; 17 tooth spline	N/A	N/A	RBX-128	17039300	E+

COX Diesel	Hub Kit #	Hub #	Hub Kit #	Hub #	Prop Category
300 HP; 19 tooth spline (Rubber & SS Hub)	RBX-123	17016300	N/A	N/A	E+

You need a Hub Kit and a Prop for complete installation :

1. Locate Horsepower/Model and Year.
2. Read across to reference RUBEX™ Hub Kit/Propeller series.
3. Select propeller diameter & pitch from corresponding propeller series.

OMC, Cobra, King Cobra, Cobra SX, Evinrude/Johnson/BRP are registered trademarks of the Bombardier Recreational Products Inc. Mercury, Mariner, Mercruiser, Typhoon, Quicksilver & Force are registered trademarks of the Brunswick Corporation. Volvo is a registered trademark of Volvo Penta Marine Products L.P. Suzuki is a registered trademark of the Suzuki Motor Corp. Yamaha is a registered trademark of the Yamaha Corp. Honda is a registered trademark of the Honda Motor Co., Ltd. Tohatsu is a registered trademark of the Tohatsu Corp. Nissan is a registered trademark of the Nissan Jidosha Motor Corp.